

# Pro Rail Services

## CCTV SURVEY DRAINAGE SERVICES

**Pro Rail Services** provides a complete inspection and Railway Drainage Survey Service. We are competent in the delivery of all types of track drainage investigation works as well as open ditches, culverts and outfalls. We also operate our own On Track Plant Catchpit Suction Unit which works in conjunction with our CCTV Survey Teams.

**Pro Rail Services is one of Network Rails foremost specialist providers of CCTV Surveys for Railway Track Drainage, Sewers Crossing Railway and other enclosed structures e.g. culverts on Network Rail Infrastructure.**

CCTV survey and reporting is delivered by trained, OS19x competent personnel and the CCTV survey reports are reviewed by our Head of Surveying, then delivered in electronic format to Network Rail specification and standards.

Pro Rail Services also offers a complete solution with regard to sanitising areas of contaminated track bed in station confines safely, efficiently and effectively. We clean a 3m swathe of track using high pressure water & cleaning solutions to allow improved track inspections.

Pro Rail Services works nationally on all Network Rail Routes / Regions.

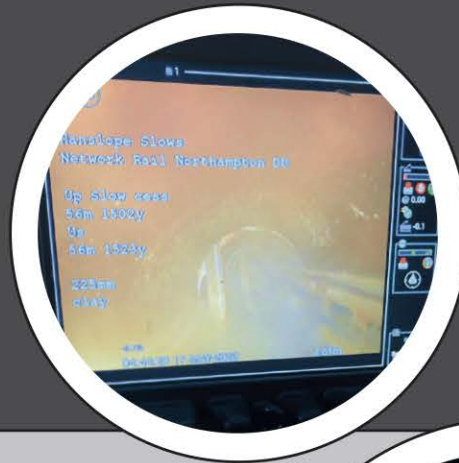


# Pro Rail Services

## CCTV SURVEY DRAINAGE SERVICES

### Drainage Services include:

- CCTV survey & reporting
- Track drainage inspection
- Track drainage high pressure cleaning
- Sonde and tracing
- MiniCam hardware
- WinCan VX software
- Integrated CCTV and topo survey report



Whether it is an asset inspection or a detailed condition assessment, Pro Rail Services has a broad range of specialist CCTV equipment on railway infrastructure supported by trained, WITA (Water Industry Training Accreditation) qualified and experienced engineers.

We utilise industry and sector leading software to collect, validate, analyse, report and manage data including; WinCan, InfoNet and we utilise the WRc MSCC for condition assessment defect classification.

### Applications:

- Sewer or track drainage inspection and condition assessment
- Railway platform manhole inspection and condition assessment
- Culvert inspection and/or condition assessment
- Post UV pipe lining inspection
- Railway culverts inspection specialists
- Signalling chambers and UTX inspections

### Benefits:

- Colour, pan, tilt and zoom mainline systems
- Push rod, crawler and float mounted systems
- Steerable heavy duty culvert crawler
- Capable of surveying pipes in diameters 100 - 1500mm
- Up to 500 metres survey length from a single access point
- Battery operated units (noise sensitive locations)



Unit 2-4 Little Ridge | The Ridgeway | Welwyn Garden City | Hertfordshire | AL7 2BH

**01707 927400**

[info@prorailservices.co.uk](mailto:info@prorailservices.co.uk)

[www.prorailservices.co.uk](http://www.prorailservices.co.uk)

