

# Pro Rail Services

## GEOTECHNICAL DIVISION

**Pro Rail Services** has been providing specialist geotechnical and drainage services within the railway sector for over 11 years. With our specialist geotechnical teams all projects are approached on an individual basis providing innovative solutions to site specific problems. We cover the whole of the UK and Irish Rail network from our seven offices located in Warrington, York, Welwyn Garden City, Horsham, Newport (Wales), Southampton and Mayo (Ireland) allowing our teams to be mobilised quickly and efficiently.

**Pro Rail Services** (Geotechnical Division) operates as a specialist geotechnical survey, design and build contractor offering design & build solutions using our specialist design teams and project delivery staff, utilising our fleet of on-track plant and our off-track capabilities.



Pro Rail Services

ON TRACK  
TO GO  
GREEN

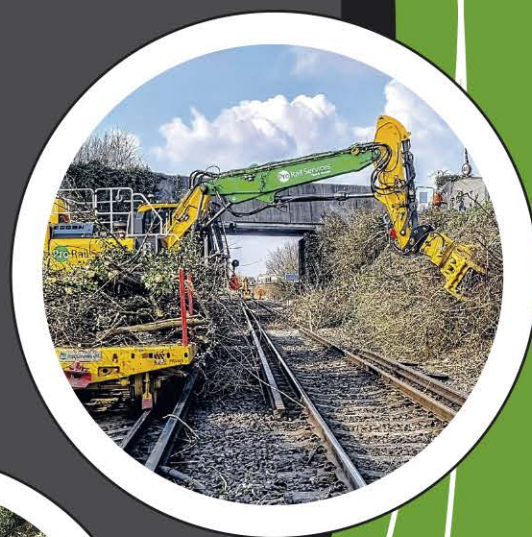


# Pro Rail Services

## GEOTECHNICAL DIVISION

Applying our specialist knowledge of geotechnical solutions, **Pro Rail Services** are able to deliver a comprehensive range of geotechnical solutions, managing the most difficult access constraints, including:

- Topographical Surveys
- Ecology Surveys & SSSI Assessments
- Slope Monitoring
- Ground Investigation including Ground Probing Radar Surveys
- Drainage CCTV Surveys
- Vegetation Management
- Access Planning and enabling works
- Site compound set up
- ALO Planning
- Detailed Design & Assurance
- Drilling & Grouting
- Soil Nailing & Facing Systems
- Rock Bolts & Netting, utilising our rope access systems
- Anchors & Tie Bars
- Rock Catch Fences
- Sheet Piling, Bored Piling and Kingpost Walls
- Earthworks Drainage - Repairs / Installation e.g. flumes, cascades and counterfort drains
- Reinforced Earth Walls
- Gravity retaining walls such as Gabion Walls, Redi-Rock Walling and Crib Walling
- Embankment and cutting stabilisation works
- Land slip remediation
- Slope drainage systems
- Lined and unlined ditches
- Emergency works
- CEM/CRE Duties
- Scour Protection works



Unit 2-4 Little Ridge | The Ridgeway | Welwyn Garden City | Hertfordshire | AL7 2BH

**01707 927400**

[info@prorailservices.co.uk](mailto:info@prorailservices.co.uk)

[www.prorailservices.co.uk](http://www.prorailservices.co.uk)



# Pro Rail Services

## GEOTECHNICAL DIVISION

Our Geotechnical Project Delivery works are undertaken in compliance with Network Rail standards and procedures and in line with the relevant project specific deliverables detailed in the contract documentation.

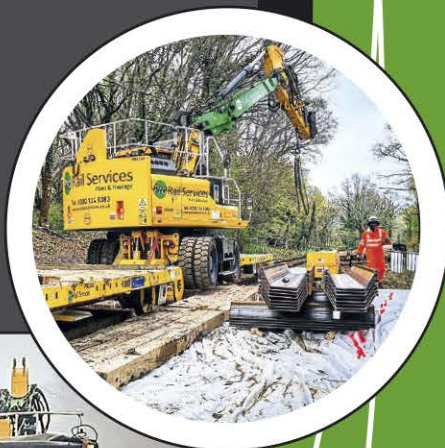
Our CEM, CRE's and Construction Management teams are all approved to complete and sign the appropriate certification to allow assets to be taken back into use and also for checking gauging and clearance issues associated with the safe passage of trains.

**Pro Rail Services** has access to a large fleet of specialist geotechnical plant, supplemented by a wide range of bespoke plant and equipment that is compliant to Network Rail Plant Operating Scheme Rules. This allows us to arrive on site with the correct plant for the job, tested and ready to go at the start of possessions / blockades / off-track solutions as appropriate.

**Pro Rail Services** actively promotes sustainable technical solutions such as low carbon concrete for use within aggressive ground and other solutions such as geopolymer injection method via our supply chain Geobear.

**Pro Rail Services** activities are underpinned by the following: ISO 9001, 14001 & 45001, Achilles RISQS for the rail industry, Safe Contractor, CIRAS, Builders Profile, Constructionline, IRATA Member, Supply Chain Sustainability School, Rail Plant Association, Permanent Way Institution, we are also a full member of the UK Civil Engineering Contractors Association.

**Pro Rail Services** prides itself on problem solving, which is often why we are approached on a repeat work winning basis. Working in honest collaboration with clients, we ensure maximum productivity during possession work, or employing systems of working that mean possessions are not required, is our main aim. From our wealth of project delivery experience, through to the teams on site, we retain a RIDDOR free statistic, achieving target cost, and with zero possession late handback.



Unit 2-4 Little Ridge | The Ridgeway | Welwyn Garden City | Hertfordshire | AL7 2BH

01707 927400

info@prorailservices.co.uk

www.prorailservices.co.uk



# Pro Rail Services

## GEOTECHNICAL DIVISION

### Geotechnical Reactive Capability:

We are an on call geotechnical reactive contractor to Network Rail and its Tier 1 contractors across the UK providing reactive solutions via our 24/7 365 dedicated call out desk, such as:

- Geotechnical failure site visit and initial assessment
- Scope development and agreement of initial resolution with the clients
- Stakeholder management with Network Rail RAM Team, land access owners and emergency services
- Vegetation management and temporary fencing installation
- Provision of on and off-track plant resources as required to suit (under our NR POS licence)
- Topo and drainage CCTV survey
- Temporary works design and implementation on site
- Provision of temporary design solution to maintain railway operational service capability
- Project Management and safety critical staff provision
- On site construction management and associated site engineering support
- Temporary haul road construction (using geobind soil - Co2 reduction initiative) and a wide range of other options
- Temporary Road Rail Access Point (RRAP) installation
- Temporary signalling asset protection
- Bulk material logistics movement
- Debris and slip failure material from site
- Drainage clearance
- Implementation of track (CRT) and slope monitoring
- Installation of either 1T bags of ballast or provision of Gabion Walls
- Provision of asset inspection service and full track handback using Forms A-G
- Cost estimating service



Unit 2-4 Little Ridge | The Ridgeway | Welwyn Garden City | Hertfordshire | AL7 2BH

**01707 927400**

[info@prorailservices.co.uk](mailto:info@prorailservices.co.uk)

[www.prorailservices.co.uk](http://www.prorailservices.co.uk)

