

# Pro Rail Services

## REACTIVE WORKS DIVISION

### WHEN RAILWAY EMERGENCIES TAKE PLACE, WE ARE ALREADY ON OUR WAY...

The rain hasn't stopped for 36 hours with a landslip blocking the line and trains are ground to a halt. That's when our 24/7/365 Reactive Division lights up. Within minutes, our self-delivery teams are on the move. Our On-Call manager mobilised to site, plant loaded, safety-critical staff briefed and a plan in place before the convoy leave the yard.

We don't wait for the problem to get worse, we make it safe and fast.



# Pro Rail Services

## REACTIVE WORKS DIVISION

### NATIONWIDE COVERAGE

Over the last 8 years, we've executed reactive works from our regional depots in:

- Warrington
- Bournemouth
- Doncaster
- Horsham
- Welwyn Garden City

From Lancaster to Honiton in Devon, Margate to Manchester, East London to Sheffield. We've delivered rapid-response civil engineering across the entire UK rail network.

All works are overseen by our competent On-Call Managers, who each have over 20 years experience executing reactive works on Network Rail infrastructure nationwide.



### WHY NETWORK RAIL AND TIER CUSTOMERS CALL US FIRST

- **Proven Speed:** Mobilisation of HIABs, low-loaders and full crews to emergency incidents from as little as 2 hours.
- **Safety-First by Design:** Fully compliant with Network Rail's Lifesaving Rules and Delivery Point Management. We are RISQS approved, POS Licensed and Construction Line Gold accredited.
- **Total Control:** Direct labour, Plant Operators, COSS/ES, Crane Controllers, Site & Track handback Engineers, Planners and experienced Project Managers keep control from call-out to Track handback.
- **Own Fleet:** With our in-house Heavy-lift Doosan RRVs, suction units, mulchers, long-reach attachments, plus 24-hour crane lorries and haulage we deliver from the first call.
- **Reliability:** An award winning reliable OTP provider as evidenced on rail PPS.



Unit 2-4 Little Ridge | The Ridgeway | Welwyn Garden City | Hertfordshire | AL7 2BH

**07376 287 725**

[info@prorailservices.co.uk](mailto:info@prorailservices.co.uk)

[www.prorailservices.co.uk](http://www.prorailservices.co.uk)



# Pro Rail Services

## REACTIVE WORKS DIVISION

### REACTIVE WORKS PRO RAIL DELIVER

#### Track Drainage

- Track flooding alleviation, reactive jetting & pumping
- Culvert collapses & counterfort drainage installation

#### Survey & Monitoring

- Drainage CCTV & topographical surveys
- GPR surveys
- Remote monitoring system installation
- CRT & Track monitoring
- Drone Surveys
- Conductivity & Resistivity Surveys

#### Geotech & Structures

- Emergency sheet piling
- Retaining wall collapse repairs
- Emergency gabion basket and legato block installation
- Parapet & bridge deck temporary propping & scaffold installation
- Temporary works design, installation & monitoring

#### Vegetation & Site Clearance

- Tree removal from track
- Emergency vegetation management
- Spoil removal from track with in-house OTP

#### Access & Safety

- Emergency Access Steps
- Fencing repairs
- Alleviation to flooded station car parks
- RRV, Hybrid MEWPs & OTP for rapid reactive response under our own POS licence

### HOW WE WORK

- Triage** • Scope the job with our client within minutes of all calls
- Prepare** • Agree the access strategy and a safe system of work with our client, match the right crew, plant and attachments
- Deploy** • On site in hours, working to a fully compliant safety plan
- Stabilise** • Make safe, repair and reinstate the defective asset
- Hand Back** • Full records within 24-48 hours e.g A-G Forms



Unit 2-4 Little Ridge | The Ridgeway | Welwyn Garden City | Hertfordshire | AL7 2BH

**07376 287 725**

[info@prorailservices.co.uk](mailto:info@prorailservices.co.uk)

[www.prorailservices.co.uk](http://www.prorailservices.co.uk)



# Pro Rail Services

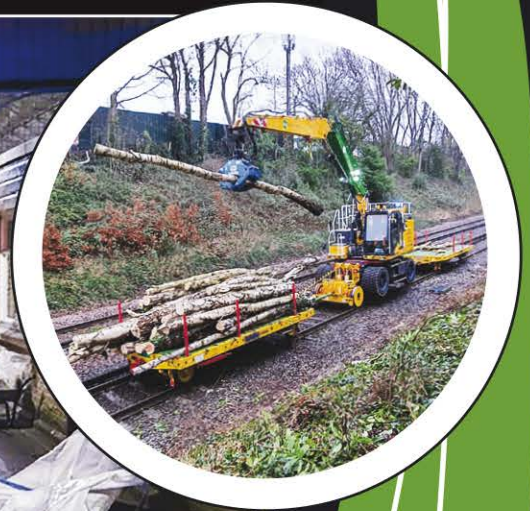
## REACTIVE WORKS DIVISION

### OUR EMERGENCY PROMISE

- Mobilise deployment within 30 minutes from instruction
- On site within 2-4 hours
- Make-safe within 5-12 hours for standard incidents

**ONE CALL GETS THE RAILWAY  
MOVING AGAIN...**

**CONTACT US ANYTIME:  
07376 287 725**



Unit 2-4 Little Ridge | The Ridgeway | Welwyn Garden City | Hertfordshire | AL7 2BH

**07376 287 725**

[info@prorailservices.co.uk](mailto:info@prorailservices.co.uk)

[www.prorailservices.co.uk](http://www.prorailservices.co.uk)

